

**GMI WHEELS & MARATHON
SPECIAL OFFER**

MARATHON
INDUSTRIES INTERNATIONAL



**Try a set of wheels
RISK FREE
& compare tire health**



See how our products and services can help your operation



GMI WHEELS THE OTR WHEEL PROS

GMI Wheels is a globally recognized OTR wheel manufacturer and supplier for all off-highway industries.

Founded by industry experts with over 150 combined years of experience in OTR wheel engineering and sales.

GMI Wheels is driven to deliver **class-leading tire life, air seal and durability**, reducing downtime and tire budgets.



CONSULTATION AND DEVELOPMENT

Our success is built on our consultative, collaborative approach to customer service.

When working with GMI Wheels, you work with a team possessing over **150-combined years of OTR wheel manufacturing and engineering knowledge**, with extensive experience on mine sites across the globe.



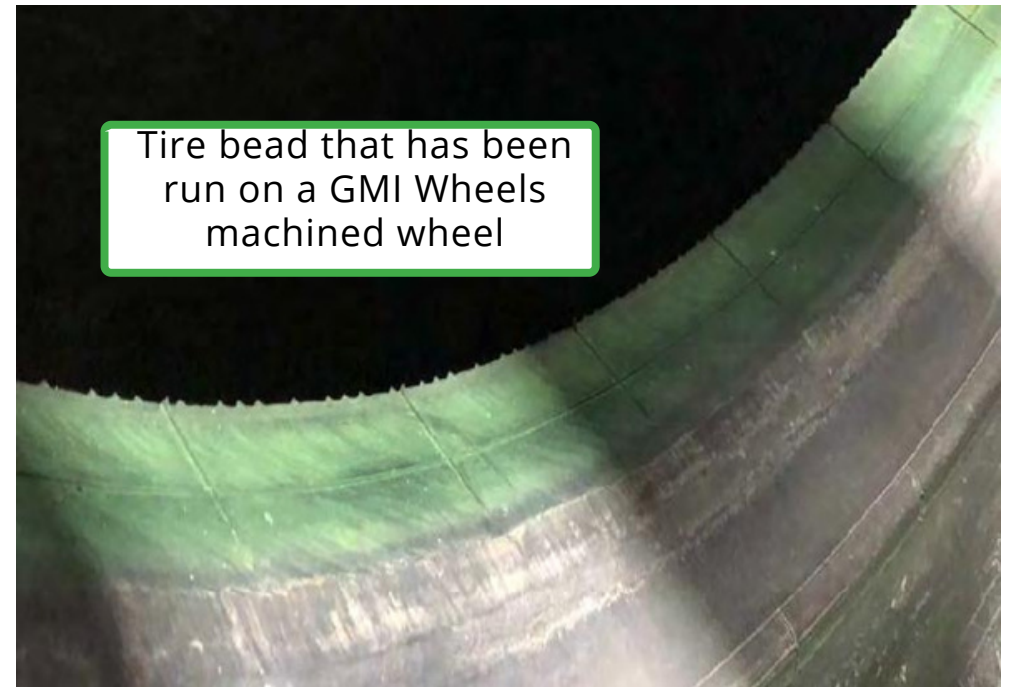
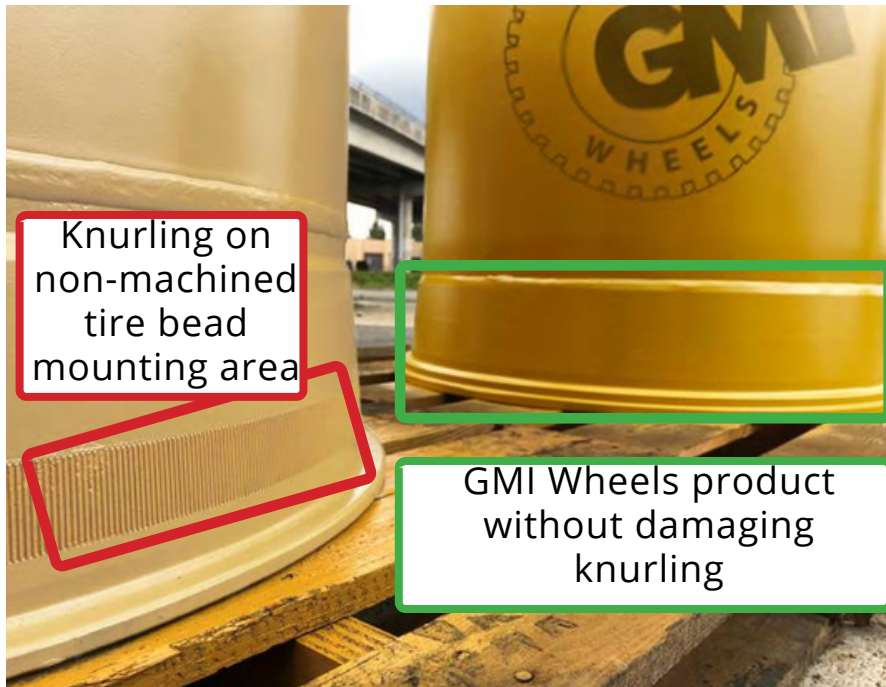
WHY CHOOSE GMI WHEELS?

GMI Wheels: Smooth Surfaces

GMI Wheels products use a machining process, making them 100-percent round and smooth, eliminating the need for damaging knurling.

This enables our wheels to transmit high torque from the truck drivetrain to the tire bead area without damage to the tire.

In certain applications, GMI Wheels products can provide double or nearly triple the tire life versus conventional wheel competitors, significantly reducing tire costs and waste.



WHY CHOOSE GMI WHEELS?

TIRE LIFE & AIR SEAL

Conventional OTR wheels are rolled and welded, creating an imperfect shape that often isn't aligned and perfectly round. To compensate, knurling is added to the bead seating areas, chewing into the tire bead.

Conventional Wheels: Damaging Knurling

Knurling found on competing wheels prematurely damage tire beads, **rendering them unuseable even if the tread is in good condition.**

Over time, grime and debris collect in the knurling's indents, grinding at the tire bead and allowing air to escape as gaps are created - this damages the tire bead further and also causes equipment to run less efficiently due to non-optimal air retention.

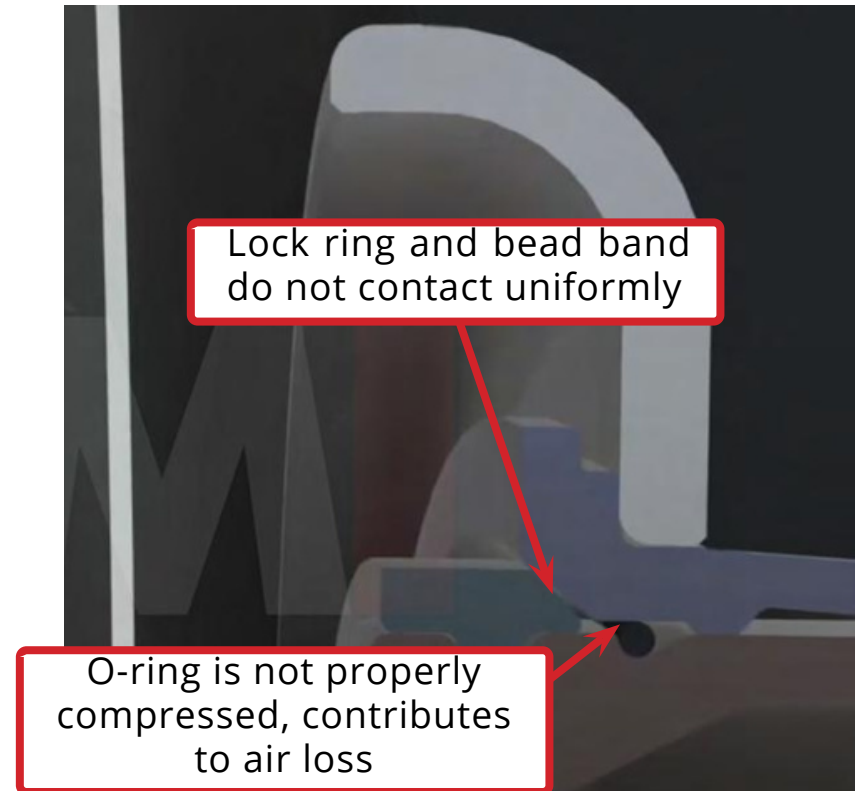
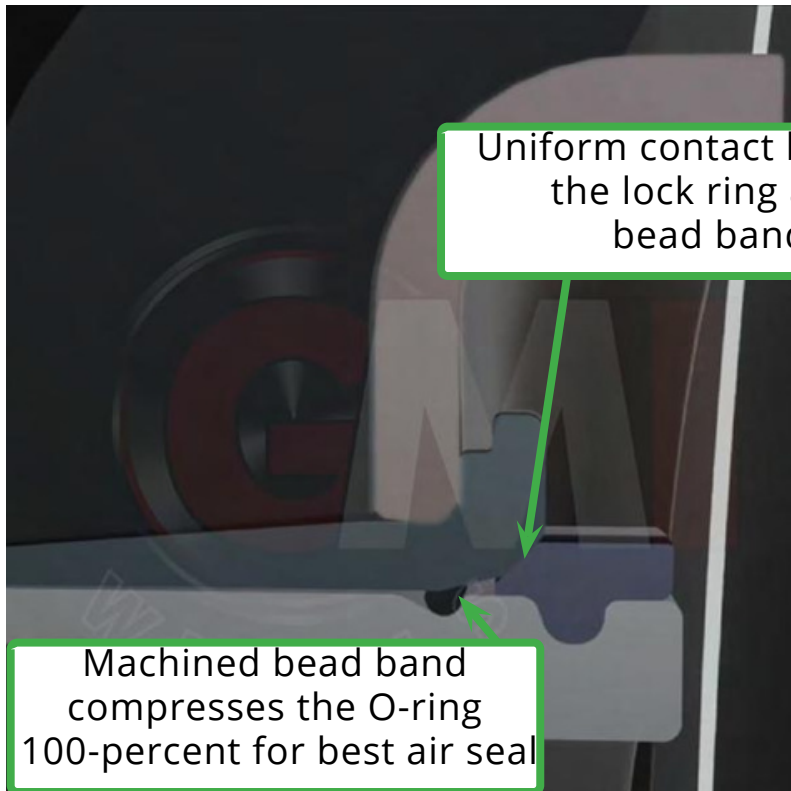


WHY CHOOSE GMI WHEELS?

GMI Wheels: Perfectly aligned

GMI Wheels products use a machining process, making them 100-percent round and smooth for uniform contact, achieving the best possible tire fitment, air seal and component fitment.

Machining ensures **critical components**, such as lock rings, bead bands and flanges, **fit together seamlessly to maintain a class-leading air seal.**



WHY CHOOSE GMI WHEELS?

PROPER COMPONENT FITMENT

Machined wheels by GMI Wheels feature perfectly aligned sections and components, ensuring components fit properly and contribute to excellent air seal.

Conventional wheels do not have these benefits. During the steel rolling process, the steel ends are not seamlessly matched before welding, causing slight variations between critical zones.

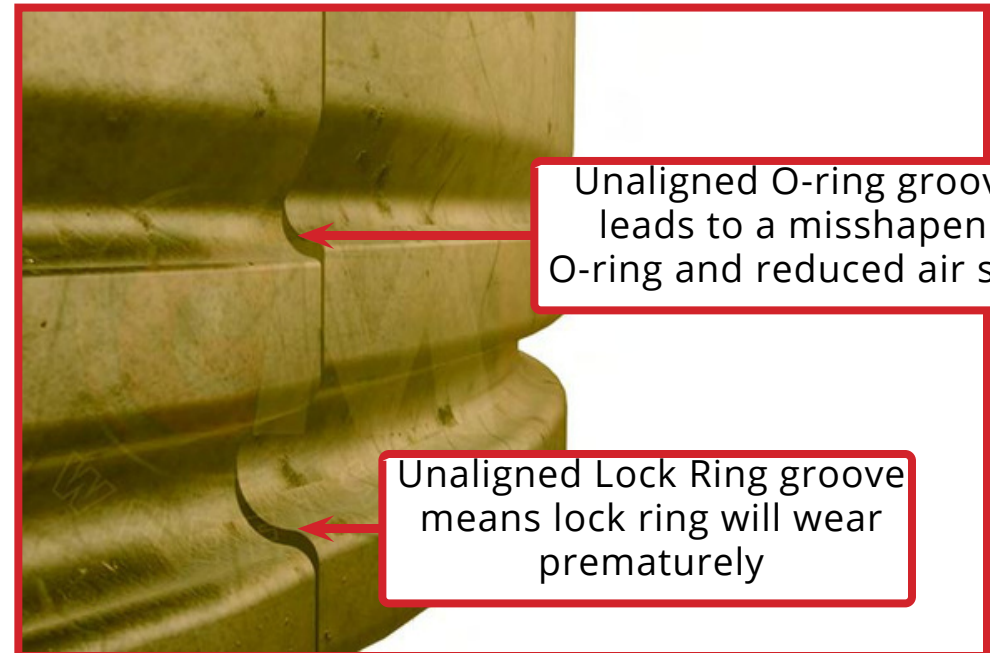
Conventional Wheels: Unaligned Zones

With these variations:

A slow air loss will occur as the newly applied **O-ring will not be completely seated in its groove**, and will experience faster wear and degradation over time.

Components such as Lock Rings will wear faster when their groove and neighboring components are misaligned.

Conventional wheel that is rolled and butt-welded



Unaligned O-ring groove leads to a misshapen O-ring and reduced air seal

Unaligned Lock Ring groove means lock ring will wear prematurely